



Submersible Sewage Grinder Pumps

GD / GDH Series Stainless Steel Motor Housing

For residential, industrial and municipal wastewater applications. Grind solids into small particles enable small OD pipeline connected to conventional sewage system.

Features

- Completely water-tight cable entry sealed with epoxy resin.
- Double mechanical seals (SIC/SIC + CA/CE) ensure greatest durability.
- Without clogging or binding. No close clearance and all flow passages are unobstructed.
- Grinder impeller and shredding ring are easily replaceable, no need to take pump apart. The parts are made of High Chrome Steel with HRC 55 – 58 to grind paper, textile material and solid contaminants in waste water.

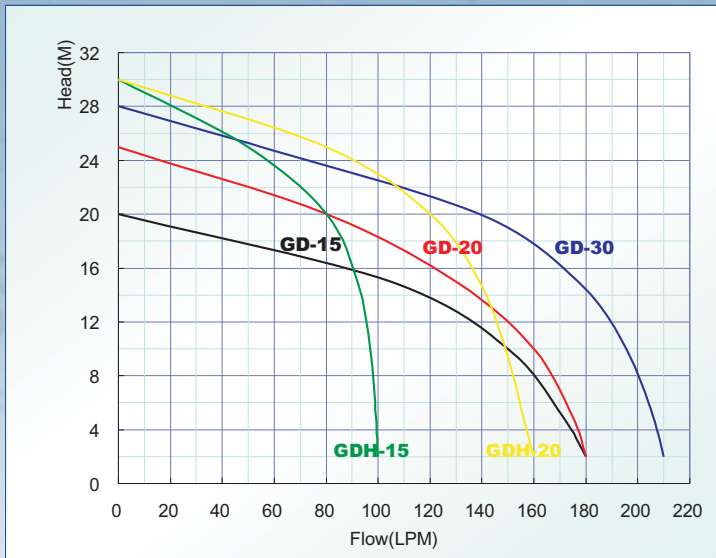


Applications:

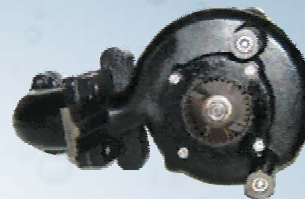
- Low pressure sewerage and individual residential applications.
- Pump slurry or wastewater to a treatment plant, lagoon, or gravity manhole through a discharge pipe as small as 1-1/4" in diameter.
- Waste treatment for villas, summer houses and other residential areas which can not be directly connected to the existing sewage system.

GD/GDH Series

Performance

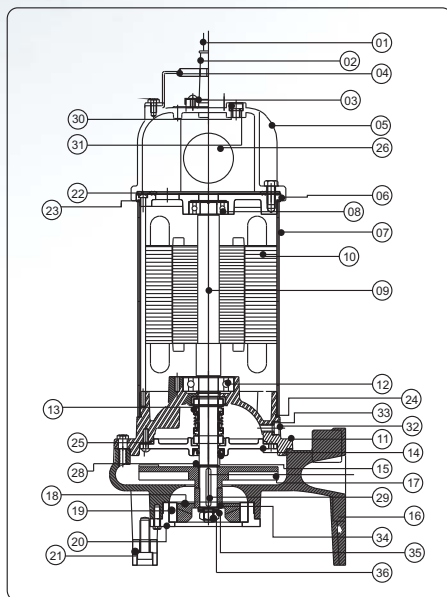


• Guide Rail Pedestal



Construction

• Bottom View of Chrome Steel Cutter



NO.	Description	Material	NO.	Description	Material
1	Power Cord	AWG/H07RNF	19	Cutter Ring	CHROME STEEL
2	Rubber Head	NBR	20	Cutter Seat	FC 200
3	Gland	SUS	21	Base	PC
4	Handle	SUS 304	22	Gasket	NBR
5	Top Cover	FC 200	23	O-ring	NBR
6	Bearing Cover	FC 200	24	O-ring	NBR
7	Motor Housing	SUS 304	25	O-ring	NBR
8	Upper Bearing	CNM5K	26	Capacitor	PP
9	Shaft	SUS 410	27	Retaining Ring	SUS
10	Stator	SILICON STEEL	28	Retaining Ring	SUS
11	Seal Plate	FC 200	29	Key	SUS
12	Lower Bearing	CNM5K	30	Screw	SUS
13	Me. Seal	CA/CE	31	Packing	NBR
14	Seal Cover	FC 200	32	Screw	SUS
15	Oil Seal	NBR	33	Packing	NBR
16	Pump Casing	FC 200	34	Washer	SUS
17	Impeller	FC 200	35	Spring Washer	SUS
18	Cutter	CHROME STEEL	36	Nut	SUS

Remarks: With optional TC/TC+CA/CE double mech. seal, guide rail pedestal, and control panel.

Specifications

Model No.	Output		Outlet		Max Flow(LPM)	LPM Flow @ Head					Max Head(M)	Dimension L x W x H(mm)	Weight Kg
	HP	KW	mm	inch		5M	10M	15M	20M	25M			
GD-15	1.5	1	32	1-1/4"	180	170	150	105	-	-	20	245 x 200 x 525	30
GD-20	2	1.5	32	1-1/4"	180	175	160	130	80	-	25	245 x 200 x 525	32
GD-30	3	2.2	32	1-1/4"	210	205	195	180	140	55	28	245 x 200 x 575	35

Model No.	Output		Outlet		Max Flow(LPM)	LPM Flow @ Head					Max Head(M)	Dimension L x W x H(mm)	Weight Kg
	HP	KW	mm	inch		5M	10M	15M	20M	25M			
GDH-15	1.5	1	32	1-1/4"	100	98	95	90	80	50	30	240 x 190 x 500	30
GDH-20	2	1.5	32	1-1/4"	160	155	150	140	120	80	30	240 x 190 x 520	32



Hung Pump Group

16 Lien-Ming Street, Ba-De City 334,

Taoyuan, Taiwan

TEL:(886) -3-371-3969

FAX:(886) -3-371-3996

E-Mail: hungpump@ms9.hinet.net